

PLANTING NOTES

1. The quality of all plant material will be compatible with British Standard BS 3936 part 1, 1992 specifications – 'Nursery Stock'. The quality / standard of all soft landscape work / planting operations will be compatible with British Standard BS 4428:1989 specifications – 'Landscape Operations'. No substitutes to the approved size and species of plants within the scheme must be made without the prior written consent of the Local Authority.

2. Topsoil to be fertile with maximum 35% clay content and 5% minimum organic content, pH 5.8 - 7.5 and to be free of perennial weeds, weed seeds and contamination. Maximum stone content 20% (20mm+ particle size), maximum size of stones 50mm in any direction.
 - Existing topsoil to be ameliorated and/or screened, if necessary; to achieve this specification.
 - Imported topsoil to be to BS 3882: Multi Purpose Grade, from an approved source, and to accord with the above specification.

TREES:

3. Heavy Standard and Standard trees to be planted in pits 1000 x 1000 x 600mm depth backfilled with topsoil mixed with 80 litres of peat free organic tree planting compost and 125g 'Sierrablen Flora' slow release fertiliser, supported by 1 no. 100mm x 1200mm softwood timber stake, 500mm to extend above ground level and 1 No. adjustable tree tie. Trees will be root-balled or container grown; depending on the time of year when planting operations are carried out.

4. All trees planted within grassed areas to have area 1.5 metre wide around trees left free of all grass, turf, weed growth etc and area mulched in accordance with clause 15. All standard trees are to be fitted with 'Greenleaf "Root-rain Urban" irrigation pipe and inlet, or similar approved, size as appropriate.

5. All trees within 3m of existing or proposed footpaths or hard surfaced areas are to be planted with tree root barriers e.g. 'Greenleaf' Root 600 / 1000 placed between the tree and footpath / hard surfaced area.

6. No trees are to be planted within 3m of sewers or services (or other easement recommended by the relevant statutory undertaker) without the use of tree root barriers, e.g. 'Greenleaf' Reroot 600 /100 placed between the tree and services. The Contractor is to ascertain the location of all sewers and services prior to carrying out any tree planting.

PLANTING BEDS:

7. Planting beds to have a minimum depth of 450mm topsoil over 150mm broken up ground with all stones over 50mm removed. Soil conditioner: Sanitized and stabilised compost to BSI PAS 100. Apply 50mm depth even coverage and incorporate into topsoil during cultivation operations, to a minimum depth of 150mm. Compost to be Compost Association certified, or from an approved supplier conforming to this specification. If no local supplies are available alternative organic peat free compost may be specified, subject to the Landscape Architect's approval.

8. Shrubs to be planted in pits 150mm wider and deeper than root spread backfilled with excavated topsoil/compost, mixed with 'Sierrablen Flora' slow release fertiliser, quantity in accordance with manufacturer's recommendations.

9. All planting beds to be mulched with matured coniferous bark, with an even particle size between 15 - 65mm, to a minimum depth of 100mm over weed free soil after completion of all planting and watering operations. Bark mulch is to be free from pests, diseases, fungus and weeds; and with no fines or dust. Source and sample of bark mulch to be approved.

GRASS AREAS:

10. Grass areas are to have a minimum depth of 150mm topsoil brought to a fine tilth all stones over 40mm (25mm for lawns), in any direction removed. Areas should be uniformly firmed. Pre- seeding fertiliser (e.g. British Seed Houses BSH2) is to be applied prior to grass seeding in accordance with manufacturer's recommendations.

-Grass seed mix to general areas to be BSH A19 mix, sown at a rate of 20g/m sq in equal sowing in transverse directions.

ONGOING MANAGEMENT AND MAINTENANCE NOTES:

1. Maintenance operations to be carried out as specified until planting becomes established (year 5 after planting).

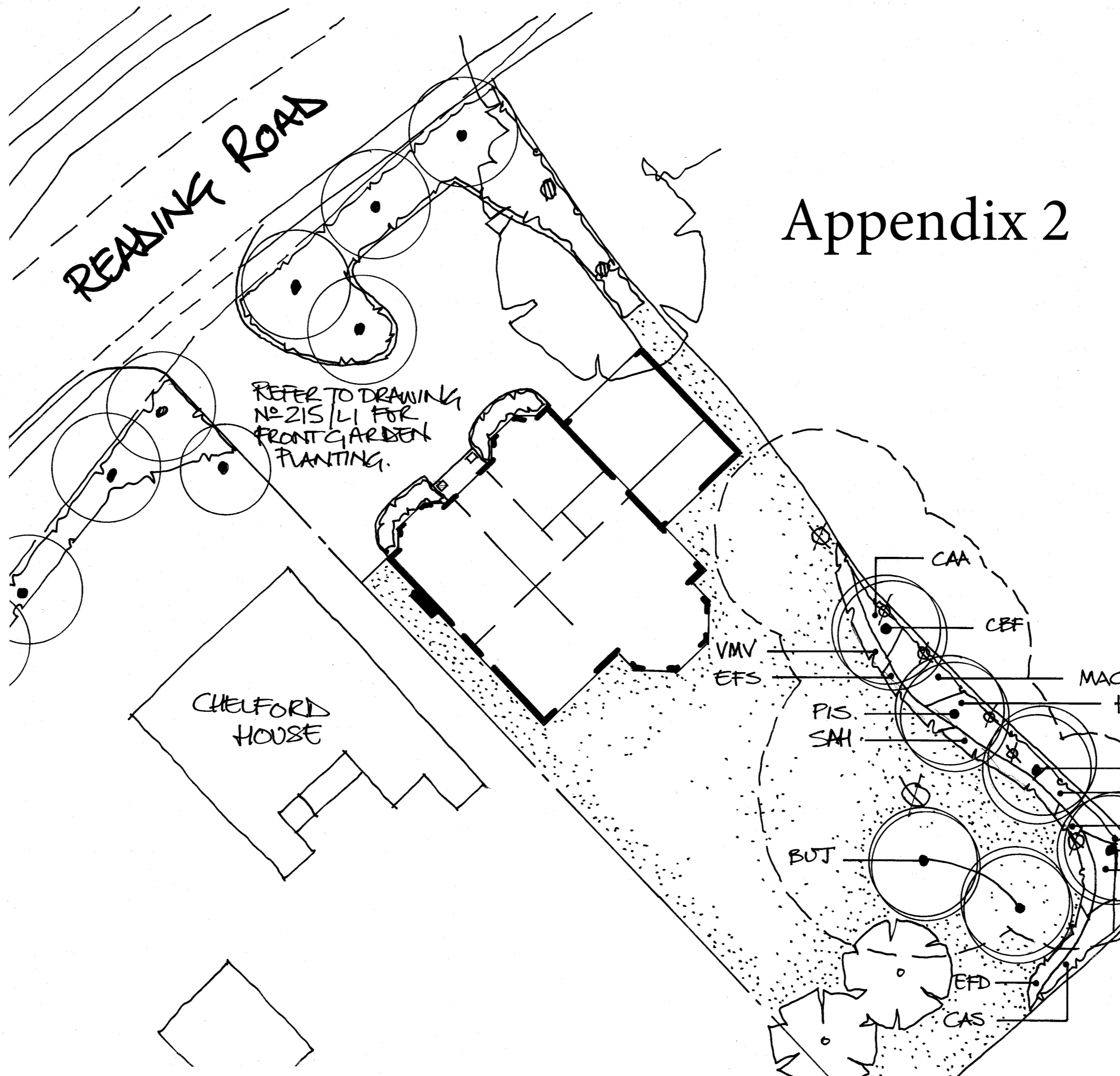
2. Trees - Check stakes and ties and adjust if necessary in summer and winter. Remove stakes when no longer required, i.e. after 3 years. Prune out damaged branches or deadwood, cutting back so as not to affect branch collar. Progressively raise canopies of new trees to provide clearance for vehicles and pedestrians.

3. Shrubs - Weed control measures to continue until canopy of shrubs is closed. Weeds are to be cleared by hand or by application of translocated herbicide, with inspections made regularly through the growing season. Prune back any badly damaged shrubs to sound growth. Cut back plants adjacent to paths and access ways where necessary, retaining a balanced shape. Clear litter and debris from planted areas and cut leggy growth hard back to promote bushy growth.

4. Watering – Trees to be watered on weekly basis at rate of 25L/tree at each operation for first two years. After which, during periods of dry weather apply sufficient water to maintain healthy growth. Allow 10L/m2 to planting beds and 25L/tree at each operation.

5. Refirming - Ensure that all trees and shrubs are firmly bedded in the ground after strong winds, frost heave or other disturbances.

7. Grass Areas - Remove litter, twigs and debris prior to first cut of each Spring. Mow lawn areas regularly, cutting to a height of 35mm, allowing 16 cuts per season.



PLANTING SCHEDULE

TREE PLANTING				
Abbr.	Species	Size	Centres	
BUJ	Betula utilis jacquemontii 'Doorenbos'	H' Std 12-14 cm	As Shown	
CBF	Carpinus betulus 'Fastigiata'	H' Std 12-14 cm	As Shown	
PIS	Pinus sylvestris	RB 3x 150-175 cm	As Shown	
PSM	Pseudotsuga menziesii	H' Std 12-14 cm	As Shown	
SHRUBS / HERBACEOUS/GROUND COVER PLANTING				
Abbr.	Species	Type/Size (cm)	Centres	
CTS	Choisya ternate 'Sundance'	5L Pot 40-60 cm	750	
CAA	Cornus alba 'Aurea'	3L Pot 60-80 cm	750	
CAS	Cornus alba 'Sibirica Variegata'	3L Pot 60-80 cm	750	
CSF	Cornus stolonifera 'Flaviramea'	3L Pot 60-80 cm	750	
EFD	Euonymus fortunei 'Darts Blanket'	2L Pot 20-30 cm	500	
EFS	Euonymus fortunei 'Silver Queen'	2L Pot 20-30 cm	500	
HGO	Hebe 'Great Orme'	3L Pot 30-40 cm	600	
HHG	Hedera helix 'Glacier'	1L Pot 20-30cm	450	
MAC	Mahonia x media 'Charity'	5-7.5L Pot 40-60 cm	750	
PFR	Photonia x fraseri 'Red Robin'	5L Pot 60-80 cm	750	
SAH	Sarcococca humilis	2L Pot 30-40 cm	600	
VMV	Vinca major 'Variegata'	3-4L Pot Clump	600	
NOTE:				
H' Std	= Heavy Standard Tree stock			
RB	= Root Balled Tree stock			
Pot	= Container grown plants			

Appendix 2

Note: Drawing remains the property of David Williams Landscape Consultancy and should not be copied without prior written consent.

Revision	Date	Initial
A - Planting species changed	13-10-2015	DHW

LEGEND

- EXISTING TREES TO BE REMOVED
- PROPOSED TREE PLANTING
- PROPOSED SHRUB PLANTING
- PROPOSED GRASS AREAS



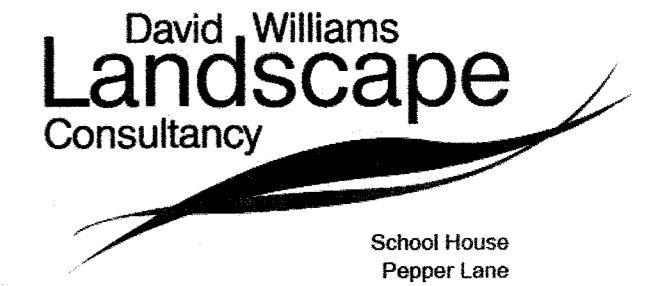
Project:
**LAND ADJACENT TO CHELFORD HOUSE,
 READING ROAD, SHIPLAKE, HENLEY-ON-
 THAMES, OXON RG9 3JN**

Drawing Title:
**LANDSCAPE PROPOSALS PLAN – REAR
 GARDEN**

Status: **PLANNING**

Date: 02-08-2015 Scale: 1:200 @ A2 size Drawn by: DHW

Project No: 0215 Drawing No: L2 Revision: A



School House
 Pepper Lane
 Reading
 Berkshire
 RG2 7DD
 e. david.williams@dwlc.co.uk
 t. 01189 099081 m. 07826 270368
 www.dwlc.co.uk

PLANTING NOTES

1. The quality of all plant material will be compatible with British Standard BS 3936 part 1, 1992 specifications - 'Nursery Stock'. The quality / standard of all soft landscape work / planting operations will be compatible with British Standard BS 4428:1989 specifications - 'Landscape Operations'. No substitutes to the approved size and species of plants within the scheme must be made without the prior written consent of the Local Authority.

2. Topsoil to be fertile with maximum 35% clay content and 5% minimum organic content, pH 5.8 - 7.5 and to be free of perennial weeds, weed seeds and contamination. Maximum stone content 20% (20mm+ particle size), maximum size of stones 50mm in any direction.
 - Existing topsoil to be ameliorated and/or screened, if necessary; to achieve this specification.
 - Imported topsoil to be to BS 3882: Multi Purpose Grade, from an approved source, and to accord with the above specification.

3. Cultivation of all planting areas within the root protection areas of existing trees beneath the canopies of existing trees is to be undertaken by hand using hand held tools only, taking care to avoid ground compaction or damage to tree roots. The use of tracked or wheeled machinery (including rotovators), must not be used and any time. Levels must not be raised (particularly by the addition / spreading of topsoil associated with any turfing or grass seeding works) or lowered, in any way unless specially approved by the Local Authority.

TREES:

4. Extra Heavy Standard trees to be planted in pits 1200 x 1200 x 750mm depth backfilled with topsoil mixed with 160 litres of peat free organic tree planting compost and 150g 'Sierrablen Flora' slow release fertiliser, supported by 2 No. 100 x 1200mm softwood timber stakes, 500mm to extend above ground level with cross piece and 2 No. adjustable tree ties. Trees will be root-balled or container grown; depending on the time of year when planting operations are carried out.

5. Heavy Standard and Standard trees to be planted in pits 1000 x 1000 x 600mm depth backfilled with topsoil mixed with 80 litres of peat free organic tree planting compost and 125g 'Sierrablen Flora' slow release fertiliser, supported by 1 No. 100mm x 1200mm softwood timber stake, 500mm to extend above ground level and 1 No. adjustable tree tie. Trees will be root-balled or container grown; depending on the time of year when planting operations are carried out.

6. All trees planted within grassed areas to have area 1.5 metre wide around trees left free of all grass, turf, weed growth etc and area mulched in accordance with clause 15.

7. All standard trees are to be fitted with 'Greenleaf' 'Root-rain Urban' irrigation pipe and inlet, or similar approved, size as appropriate.

8. All trees within 3m of existing or proposed footpaths or hard surfaced areas are to be planted with tree root barriers e.g. 'Greenleaf' Reroot 600 / 1000 placed between the tree and footpath / hard surfaced area.

9. No trees are to be planted within 3m of sewers or services (or other easement recommended by the relevant statutory undertaker) without the use of tree root barriers, e.g. 'Greenleaf' Reroot 600 / 1000 placed between the tree and services. The Contractor is to ascertain the location of all sewers and services prior to carrying out any tree planting.

10. No trees are to be planted any closer to buildings (including garages) or free standing walls, than shown on the landscape proposals. This is because tree species and locations have been determined after consideration of soil shrinkability and foundation depth in accordance with NHBC Standards for medium shrinkability soil.

PLANTING BEDS:

11. Planting beds to have a minimum depth of 450mm topsoil over 150mm broken up ground with all stones over 50mm removed. Soil conditioner: Sanitized and stabilised compost to BS1 PAS 100. Apply 50mm depth even coverage and incorporate into topsoil during cultivation operations, to a minimum depth of 150mm. Compost to be Compost Association certified, or from an approved supplier conforming to this specification. If no local supplies are available alternative organic peat free compost may be specified, subject to the Landscape Architect's approval.

12. Shrubs to be planted in pits 150mm wider and deeper than root spread backfilled with excavated topsoil/compost, mixed with 'Sierrablen Flora' slow release fertiliser, quantity in accordance with manufacturer's recommendations.

13. Hedge plants to be planted in staggered rows 500 mm apart at centres specified in schedule.

14. All planting beds to be mulched with matured coniferous bark, with an even particle size between 15 - 65mm, to a minimum depth of 100mm over weed free soil after completion of all planting and watering operations. Bark mulch is to be free from pests, diseases, fungus and weeds; and with no fines or dust. Source and sample of bark mulch to be approved.

GRASS AREAS:

16. Grass areas are to have a minimum depth of 150mm topsoil brought to a fine tilth all stones over 40mm (25mm for lawns), in any direction removed. Areas should be uniformly firmed. Pre-seeding fertiliser (e.g. British Seed Houses BSH2) is to be applied prior to grass seeding in accordance with manufacturer's recommendations.

-Grass seed mix to general areas to be BSH A19 mix, sown at a rate of 20g/m² in equal sowing in transverse directions.

ONGOING MANAGEMENT AND MAINTENANCE NOTES:

1. Maintenance operations to be carried out as specified until planting becomes established (year 5 after planting).

2. Trees - Check stakes and ties and adjust if necessary in summer and winter. Remove stakes when no longer required, i.e. after 3 years. Prune out damaged branches or deadwood, cutting back so as not to affect branch collar. Progressively raise canopies of new trees to provide clearance for vehicles and pedestrians.

3. Shrubs - Weed control measures to continue until canopy of shrubs is closed. Weeds are to be cleared by hand or by application of translocated herbicide, with inspections made regularly through the growing season. Prune back any badly damaged shrubs to sound growth. Cut back plants adjacent to paths and access ways where necessary, retaining a balanced shape. Clear litter and debris from planted areas and cut leggy growth hard back to promote bushy growth.

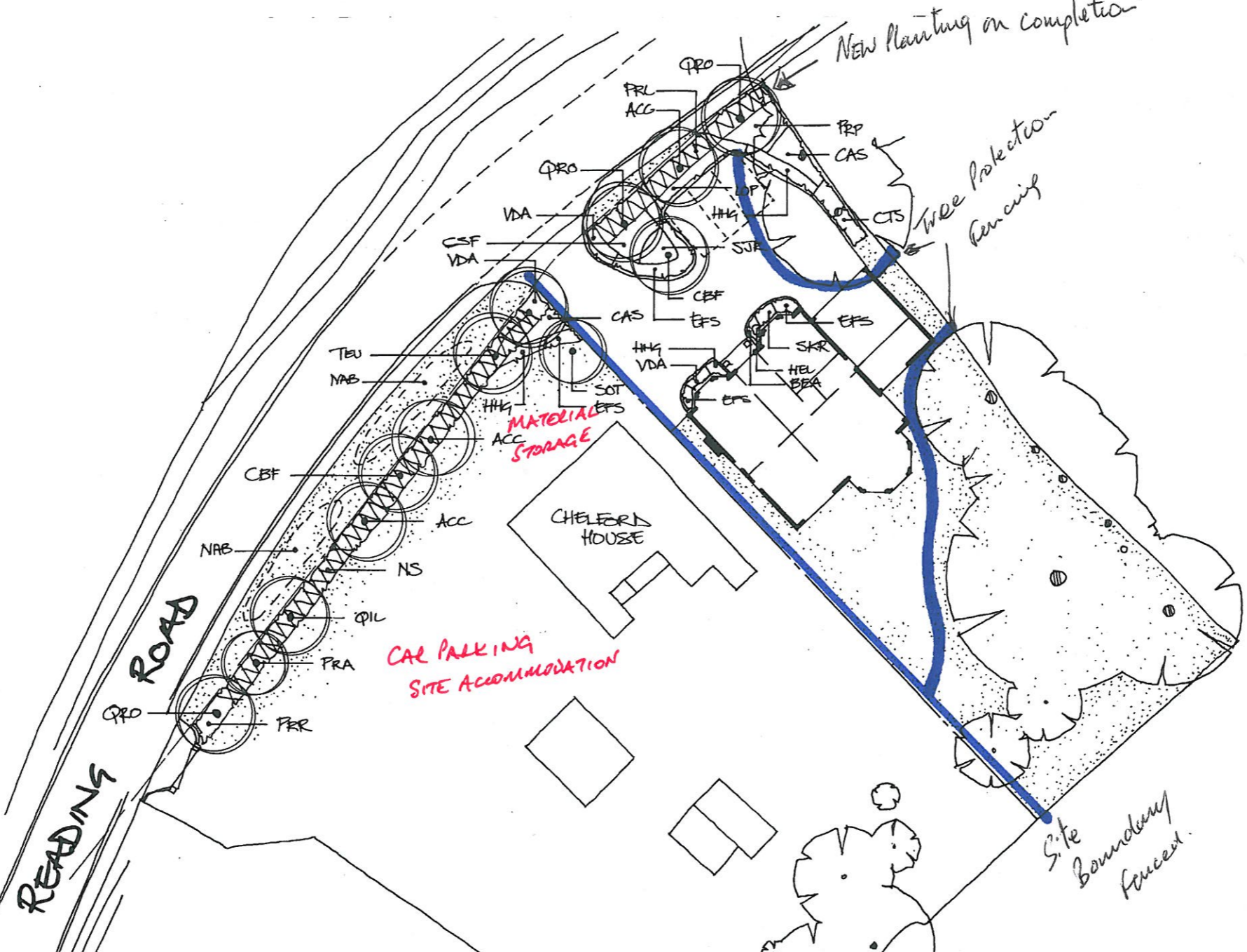
4. Watering - Trees to be watered on weekly basis at rate of 25L/tree at each operation for first two years. After which, during periods of dry weather apply sufficient water to maintain healthy growth. Allow 10L/m² to planting beds and 25L/tree at each operation.

5. Refirming - Ensure that all trees and shrubs are firmly bedded in the ground after strong winds, frost heave or other disturbances.

6. Hedges - Prune hedge annually during winter period to shape and/or promote bushy growth. Leader not to be cut until desired height is reached.

7. Grass Areas - Remove litter, twigs and debris prior to first cut of each Spring. Mow lawn areas regularly, cutting to a height of 35mm, allowing 16 cuts per season.

8. Protection/Reinstatement - Regularly inspect all planting and grassed areas, e.g. once a month, for any pest damage or vandalism/damage caused by others. Any damage to be reported to the Employer and rectified in the next available season by replacement planting or reseeded/ turfing and protective measures if required.



Note: Drawing remains the property of David Williams Landscape Consultancy and should not be copied without prior written consent.

Revision	Date	Initial

LEGEND

	EXISTING TREES AND OTHER VEGETATION RETAINED
	PROPOSED TREE PLANTING
	PROPOSED SHRUB PLANTING
	PROPOSED HEDGE PLANTING
	PROPOSED GRASS AREAS

PLANTING SCHEDULE

TREE PLANTING				
Abbr	Species	Type/Size (cm)	Centres	Quantity
ACC	Acer campestre	H Std (RB/Pot)	12 - 14 cm	As shown
CBF	Carpinus betulus 'Fastigiata'	H Std (RB/Pot)	12 - 14cm	As shown
PRA	Prunus avium	Std (RB/Pot)	8 - 10 cm	As shown
QIL	Quercus ilex	Ex H Std (RB/Pot)	14 - 16 cm	As shown
QRO	Quercus robur	Ex H Std (RB/Pot)	14 - 16 cm	As shown
TEU	Tilia x euchlora	H Std (RB/Pot)	12 - 14 cm	As shown
SOT	Sorbus torminalis	Std (RB/Pot)	8 - 10 cm	As shown

SHRUBS / GROUND COVER PLANTING				
Abbr	Species	Type/Size (cm)	Centres	Quantity
BEA	Bergenia 'Abendglut' (Evening Glow)	1L Pot	20 - 30 cm	500
CTS	Cholysa ternata 'Sunshine'	3 L Pot	30 - 40 cm	750
CAS	Cornus alba 'Spaethii'	3 L Pot	30 - 40 cm	900
CSF	Cornus stolonifera 'Flaviramea'	3 L Pot	30 - 40 cm	900
EPS	Euonymus fortunei 'Silver Queen'	3 L Pot	30 - 40 cm	600
HHG	Hedera helix 'Glacier'	1 L Pot	20 - 30 cm	500
HEL	Heliborus orientalis	1 L Pot	20 - 30 cm	450
LOP	Lonicera pileata	3 L Pot	30 - 40 cm	600
PRR	Photonia x fraseri 'Red Robin'	3 L Pot	30 - 40 cm	900
SKR	Skimmia japonica 'Rubella'	3L Pot	30-40 cm	600
SJF	Spiraea japonica 'Firelight'	3L Pot	40 - 60 cm	600
VDA	Viburnum davidii	2L Pot	30 - 40 cm	600

HEDGE PLANTING				
Abbr	Species	Type/Size (cm)	Centres	Quantity
PRL	Prunus laurocerasus	3 L Pot	60 - 80 cm	900

NATIVE HEDGE PLANTING					
Abbr	Species	%	Type/Size (cm)	Centres	
)	Acer campestre	15%	1 + 0 Br	40-60 cm	500
	Corylus avellana	10%	1 + 2 Br	60-80 cm	500
)	Crataegus monogyna	40%	1 + 0 Br	40-60 cm	500
	Ilex aquifolium	15%	10L Pot	40-60 cm	500
)	Prunus spinosa	20%	1 + 0 Br	40-60 cm	500

BULB PLANTING (randomly scattered blocks of bulbs within area shown)				
Abbr	Species	Type/Size	Centres	Quantity
NAB	Narissus bulbocodium	3+cm (Topsize)	150 / m ²	

NOTE:

Ex H Std	= Extra Heavy Standard Trees
H Std	= Heavy Standard Trees
Std	= Standard Trees
Pot	= Container grown plants
RB	= Root Balled plants
Br	= Bare root plants

Appendix 3

Project: LAND ADJACENT TO CHELFORD HOUSE, READING ROAD, SHIPLAKE, HENLEY-ON-THAMES, OXON RG9 3JN

Drawing Title: LANDSCAPE PROPOSALS PLAN

Status: PLANNING

Date: 05-11-2014 Scale: 1:200 @ A1 size Drawn by: DHW

Project No: 0215 Drawing No: L1 Revision:

David Williams Landscape Consultancy

School House
Pepper Lane
Reading
Berkshire
RG2 7DD
e. david.williams@dwl.co.uk
t. 01189 090811 m. 07826 270385
www.dwl.co.uk

PLANTING NOTES

- The quality of all plant material will be compatible with British Standard BS 3936 part 1, 1992 specifications – "Nursery Stock". The quality / standard of all soft landscape work / planting operations will be compatible with British Standard BS 4428:1985 specifications – "Landscape Operations". No substitutes to the approved size and species of plants within the scheme must be made without the prior written consent of the Local Authority.
- Topsoil to be fertile with maximum 35% clay content and 5% minimum organic content, pH 5.8 - 7.5 and to be free of perennial weeds, weed seeds and contamination. Maximum stone content 20% (20mm-i- particle size), maximum size of stones 50mm in any direction.
 - Existing topsoil to be ameliorated and/or screened, if necessary; to achieve this specification.
 - Imported topsoil to be to BS 3882: Multi Purpose Grade, from an approved source, and to accord with the above specification.

3. Cultivation of all planting areas within the root protection areas of existing trees beneath the canopies of existing trees is to be undertaken by hand using hand held tools only, taking care to avoid ground compaction or damage to tree roots. The use of tracked or wheeled machinery (including rotovators), must not be used and any time. Levels must not be raised (particularly by the addition / spreading of topsoil associated with any turfing or grass seeding works) or lowered, in any way unless specially approved by the Local Authority.

TREES:

- Extra Heavy Standard trees to be planted in pits 1200 x 1200 x 750mm depth backfilled with topsoil mixed with 160 litres of peat free organic tree planting compost and 150g 'Sierrablen Flora' slow release fertiliser, supported by 2 No. 100 x 1200mm softwood timber stakes, 500mm to extend above ground level with cross piece and 2 No. adjustable tree ties. Trees will be root-balled or container grown; depending on the time of year when planting operations are carried out.
- Heavy Standard and Standard trees to be planted in pits 1000 x 1000 x 600mm depth backfilled with topsoil mixed with 80 litres of peat free organic tree planting compost and 125g 'Sierrablen Flora' slow release fertiliser, supported by 1 no. 100mm x 1200mm softwood timber stake, 500mm to extend above ground level and 1 No. adjustable tree tie. Trees will be root-balled or container grown; depending on the time of year when planting operations are carried out.
- All trees planted within grassed areas to have area 1.5 metre wide around trees left free of all grass, turf, weed growth etc and area mulched in accordance with clause 15.
- All standard trees are to be fitted with 'Greenleaf "Root-rain Urban" irrigation pipe and inlet, or similar approved, size as appropriate.
- All trees within 3m of existing or proposed footpaths or hard surfaced areas are to be planted with tree root barriers e.g. 'Greenleaf' Root 600 / 1000 placed between the tree and footpath / hard surfaced area.
- No trees are to be planted within 3m of sewers or services (or other easement recommended by the relevant statutory undertaker) without the use of tree root barriers, e.g. 'Greenleaf' Reroot 600 /100 placed between the tree and services. The Contractor is to ascertain the location of all sewers and services prior to carrying out any tree planting.
- No trees are to be planted any closer to buildings (including garages) or free standing walls, than shown on the landscape proposals. This is because tree species and locations have been determined after consideration of soil shrinkability and foundation depth in accordance with NHBC Standards for medium shrinkability soil.

PLANTING BEDS:

- Planting beds to have a minimum depth of 450mm topsoil over 150mm broken up ground with all stones over 50mm removed. Soil conditioner: Sanitized and stabilised compost to BSI PAS 100. Apply 50mm depth even coverage and incorporate into topsoil during cultivation operations, to a minimum depth of 150mm. Compost to be Compost Association certified, or from an approved supplier conforming to this specification. If no local supplies are available alternative organic peat free compost may be specified, subject to the Landscape Architect's approval.
- Shrubs to be planted in pits 150mm wider and deeper than root spread backfilled with excavated topsoil/compost, mixed with 'Sierrablen Flora' slow release fertiliser, quantity in accordance with manufacturer's recommendations.
- Hedge plants to be planted in staggered rows 500 mm apart at centres specified in schedule.
- All planting beds to be mulched with matured coniferous bark, with an even particle size between 15 - 65mm, to a minimum depth of 100mm over weed free soil after completion of all planting and watering operations. Bark mulch is to be free from pests, diseases, fungus and weeds; and with no fines or dust. Source and sample of bark mulch to be approved.

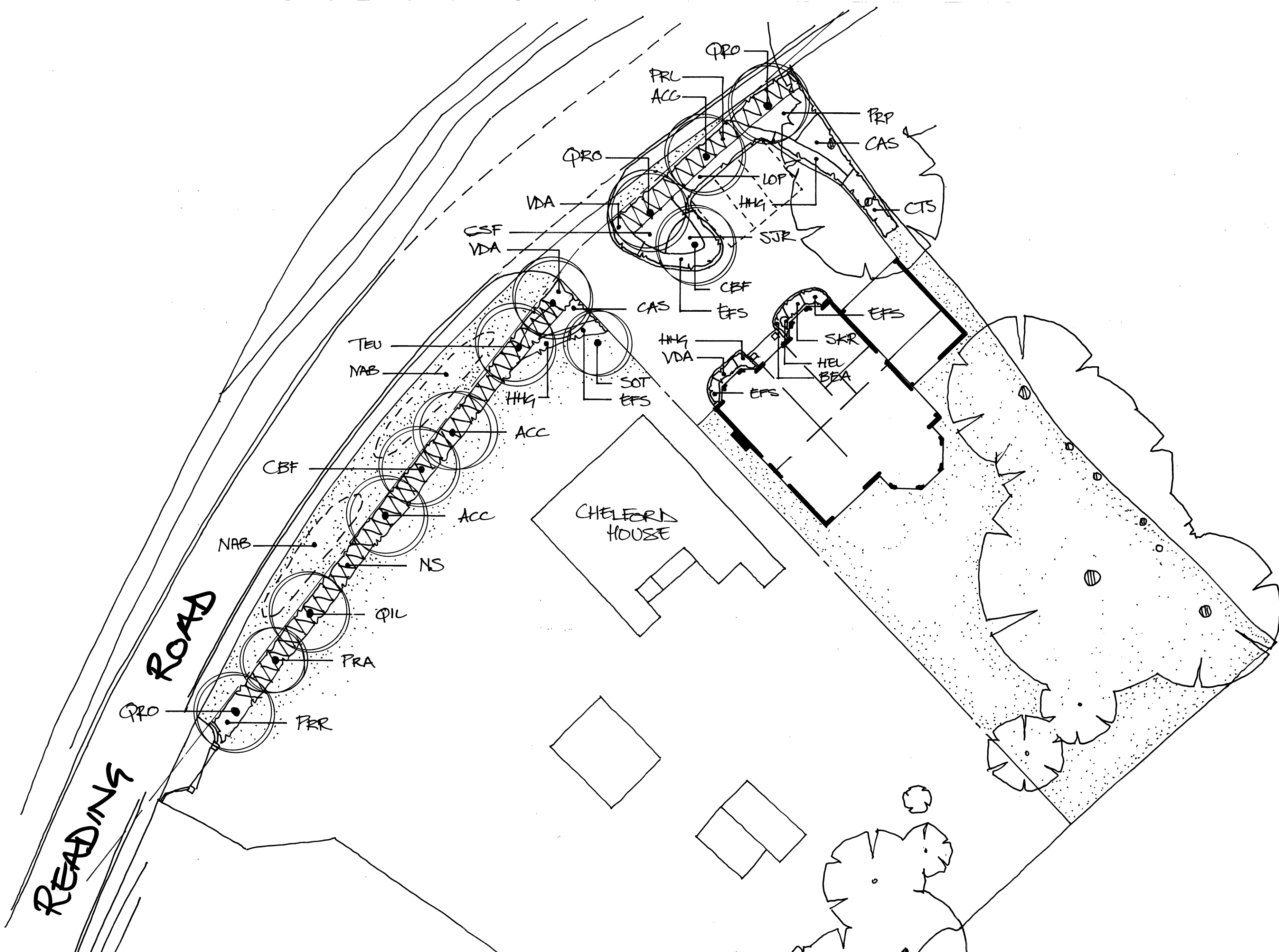
GRASS AREAS:

- Grass areas are to have a minimum depth of 150mm topsoil brought to a fine with all stones over 40mm (25mm for lawns), in any direction removed. Areas should be uniformly firmed. Pre- seeding fertiliser (e.g. British Seed Houses BSH2) is to be applied prior to grass seeding in accordance with manufacturer's recommendations.

-Grass seed mix to general areas to be BSH A19 mix, sown at a rate of 20g/m² in equal sowing in transverse directions.

ONGOING MANAGEMENT AND MAINTENANCE NOTES:

- Maintenance operations to be carried out as specified until planting becomes established (year 5 after planting).
- Trees - Check stakes and ties and adjust if necessary in summer and winter. Remove stakes when no longer required, i.e. after 3 years. Prune out damaged branches or deadwood, cutting back so as not to affect branch collar. Progressively raise canopies of new trees to provide clearance for vehicles and pedestrians.
- Shrubs - Weed control measures to continue until canopy of shrubs is closed. Weeds are to be cleared by hand or by application of translocated herbicide, with inspections made regularly through the growing season. Prune back any badly damaged shrubs to sound growth. Cut back plants adjacent to paths and access ways where necessary, retaining a balanced shape. Clear litter and debris from planted areas and cut leggy growth hard back to promote bushy growth.
- Watering - Trees to be watered on weekly basis at rate of 25L/tree at each operation for first two years. After which, during periods of dry weather apply sufficient water to maintain healthy growth. Allow 10L/m² to planting beds and 25L/tree at each operation.
- Refirming - Ensure that all trees and shrubs are firmly bedded in the ground after strong winds, frost heave or other disturbances.
- Hedges - Prune hedge annually during winter period to shape and/or promote bushy growth. Leader not to be cut until desired height is reached.
- Grass Areas - Remove litter, twigs and debris prior to first cut of each Spring. Mow lawn areas regularly, cutting to a height of 35mm, allowing 16 cuts per season.
- Protection/Reinstatement - Regularly inspect all planting and grassed areas, e.g. once a month, for any pest damage or vandalism/damage caused by others. Any damaged to be reported to the Employer and rectified in the next available season by replacement planting or reseeding/ turfing and protective measures if required.



PLANTING SCHEDULE

TREE PLANTING				
Abbr	Species	Girth/Size (cm)		Centres
ACC	Acer campestre	H Std (RB/Pot)	12 - 14 cm	As shown
CBF	Carpinus betulus 'Fastigiata'	H'Std (RB/Pot)	12 - 14cm	As shown
PRA	Prunus avium	Std (RB/Pot)	8 - 10 cm	As shown
QIL	Quercus ilex	Ex H Std (RB/Pot)	14 - 16 cm	As shown
QRO	Quercus robur	Ex H Std (RB/Pot)	14 - 16 cm	As shown
TEU	Tilia x eucliora	H Std (RB/Pot)	12 - 14 cm	As shown
SOT	Sorbus torminalis	Std (RB/Pot)	8 - 10 cm	As shown
SHRUBS / GROUND COVER PLANTING				
Abbr	Species	Type/Size (cm)		Centres
BEA	Bergenia 'Abendglut' (Evening Glow)	1L Pot	20 - 30 cm	500
CTS	Choisya ternata 'Sunshine'	3 L Pot	30 - 40 cm	750
CAS	Cornus alba 'Spaethii'	3 L Pot	30 - 40 cm	900
CSF	Cornus stolonifera 'Flaviramea'	3 L Pot	30 - 40 cm	900
EFS	Euonymus fortunei 'Silver Queen'	3 L Pot	30 - 40 cm	600
HHG	Hedera helix 'Glacier'	1 L Pot	20 - 30 cm	500
HEL	Helleborus orientalis	1L Pot	30 - 40 cm	450
LOP	Lonicera pileata	3 L Pot	30 - 40 cm	600
PRR	Photonia x fraseri 'Red Robin'	3 L Pot	30 - 40 cm	900
SKR	Skimmia japonica 'Rubella'	3L Pot	30-40 cm	600
SJR	Spiraea japonica 'Firelight'	3L Pot	40 - 60 cm	600
VDA	Viburnum davidii	2L Pot	30 - 40 cm	600
HEDGE PLANTING				
Abbr	Species	Type/Size (cm)		Centres
PRL	Prunus laurocerasus	3 L Pot	60 - 80 cm	900
NATIVE HEDGE PLANTING				
Abbr	Species	%	Type/Size (cm)	Centres
NS) Acer campestre	15%	1 +0 Br 40-60 cm	500
) Corylus avellana	10%	1 + 2 Br 60-80 cm	600
) Crataegus monogyna	40%	1 +0 Br 40-60 cm	500
) Ilex aquifolium	15%	10L Pot 40-60 cm	500
) Prunus spinosa	20%	1 +0 Br 40-60 cm	500
BULB PLANTING (randomly scattered blocks of bulbs within area shown)				
NAB	Narissus bulbocodium	-	3+cm (Topsized)	150 / m2
NOTE:				
Ex H Std	= Extra Heavy Standard Trees			
H'Std	= Heavy Standard Trees			
Std	= Standard Trees			
Pot	= Container grown plants			
RB	= Root Balled plants			
Br	= Bare root plants			

Note: Drawing remains the property of David Williams Landscape Consultancy and should not be copied without prior written consent.

Revision	Date	Initial

LEGEND

- EXISTING TREES AND OTHER VEGETATION RETAINED
- PROPOSED TREE PLANTING
- PROPOSED SHRUB PLANTING
- PROPOSED HEDGE PLANTING
- PROPOSED GRASS AREAS

NORTH

Project:
**LAND ADJACENT TO CHELFORD HOUSE,
READING ROAD, SHIPLAKE, HENLEY-ON-
THAMES, OXON RG9 3JN**

Drawing Title:
LANDSCAPE PROPOSALS PLAN

Status: **PLANNING**

Date: 05-11-2014 Scale: 1:200 @ A1 size Drawn by: DHW
 Project No: 0215 Drawing No: L1 Revision:

David Williams
Landscape Consultancy

School House
Pepper Lane
Reading
Berkshire
RG2 7DD

© david.williams@dwlc.co.uk
t. 01189 090811 m. 07826 270388
www.dwlc.co.uk